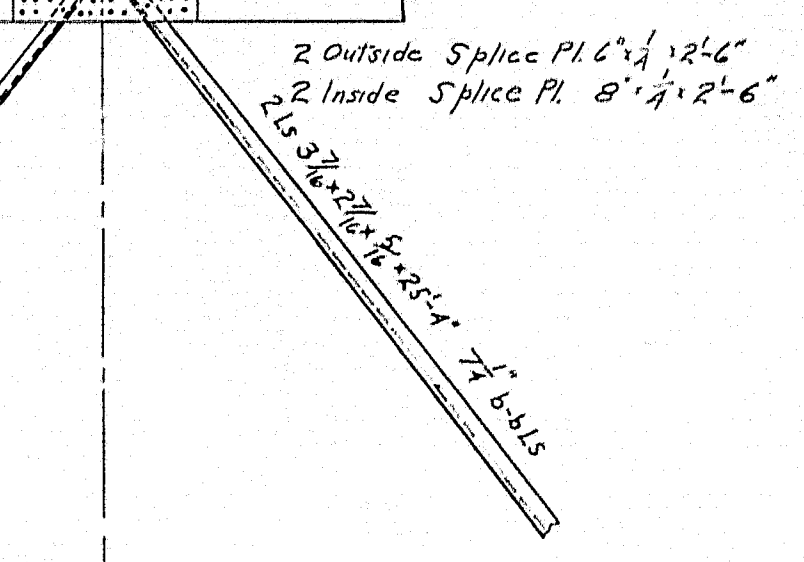
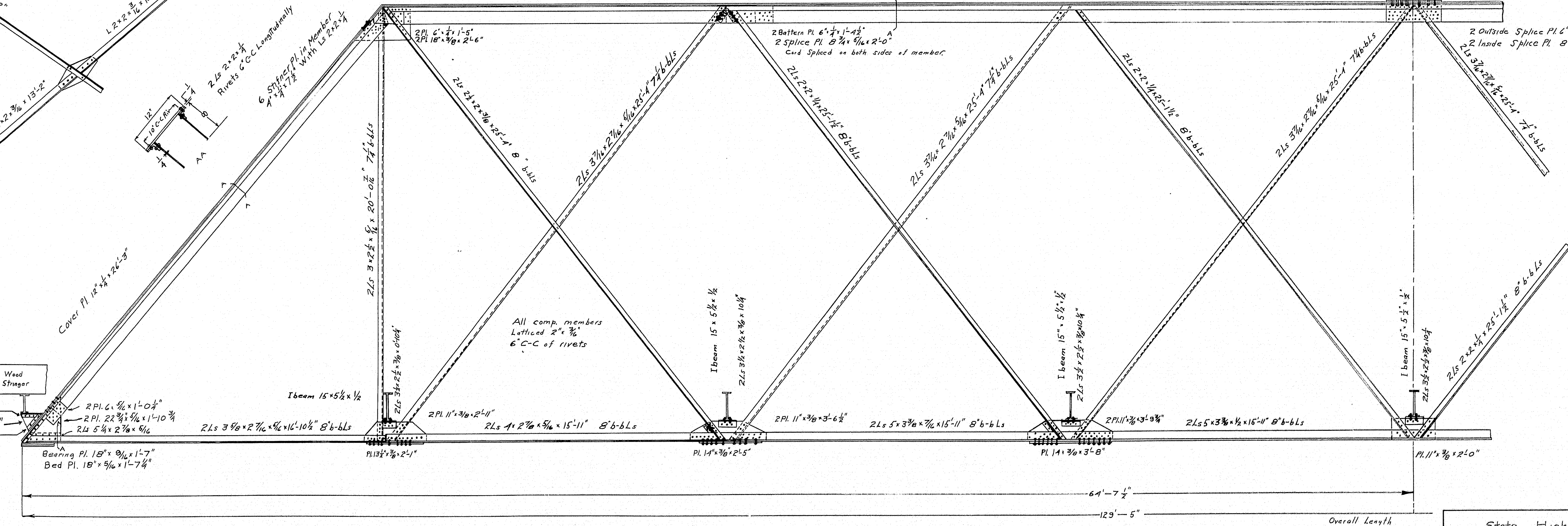
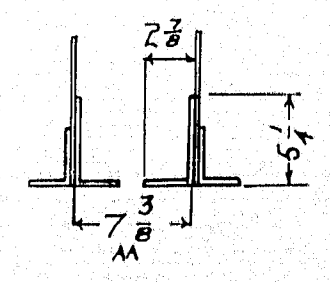
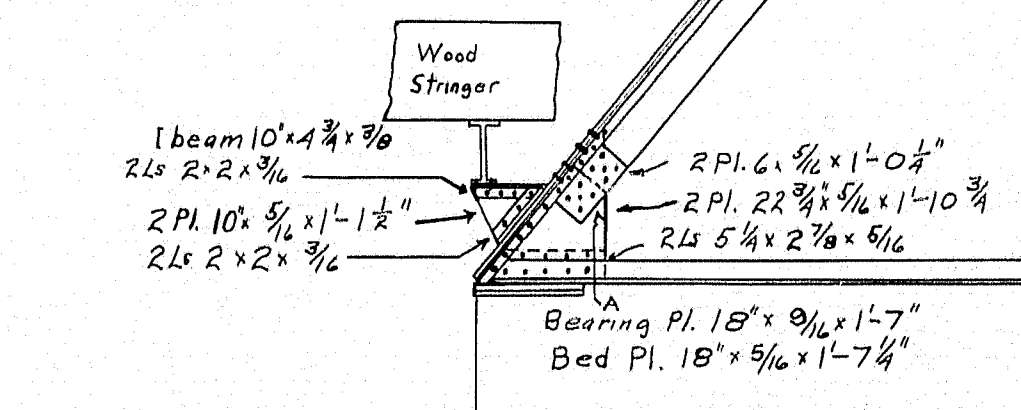
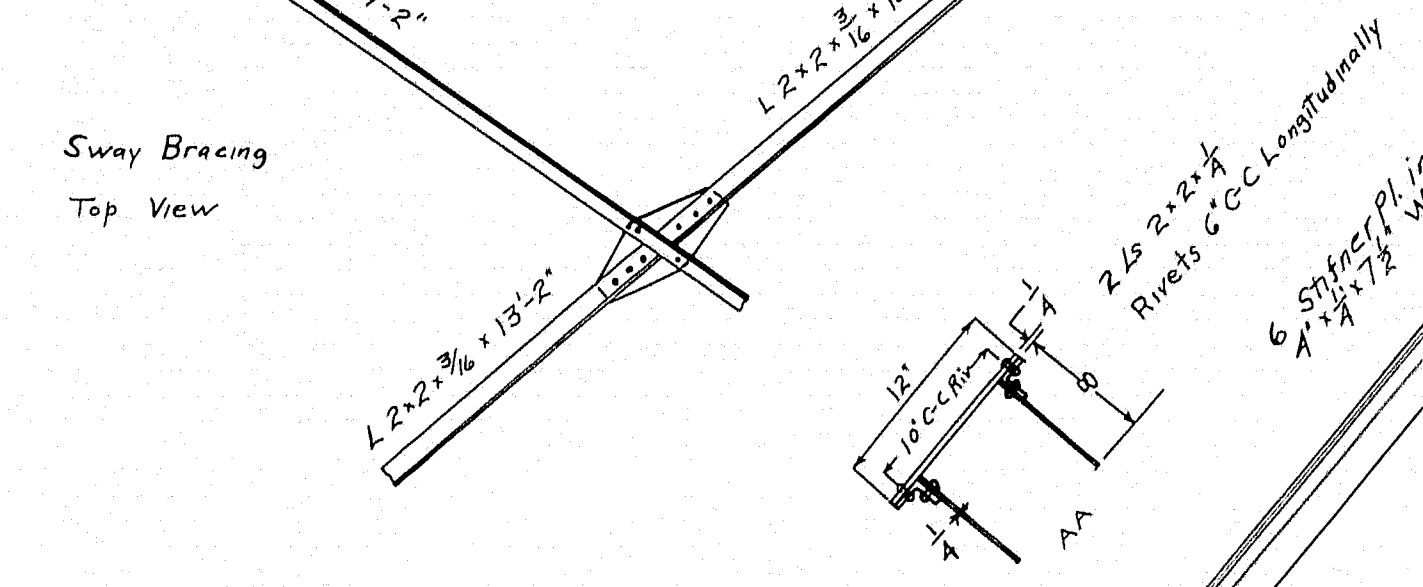
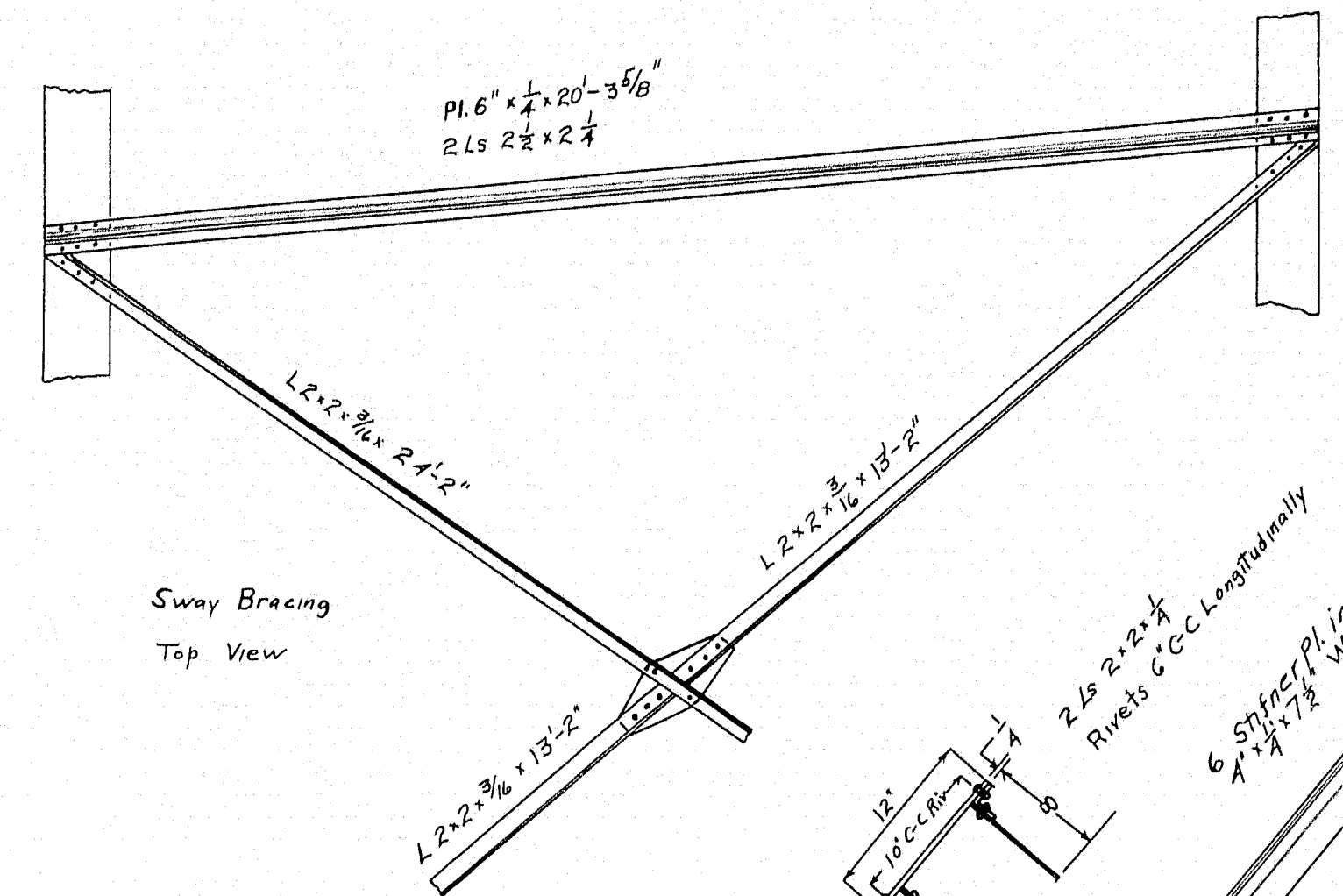
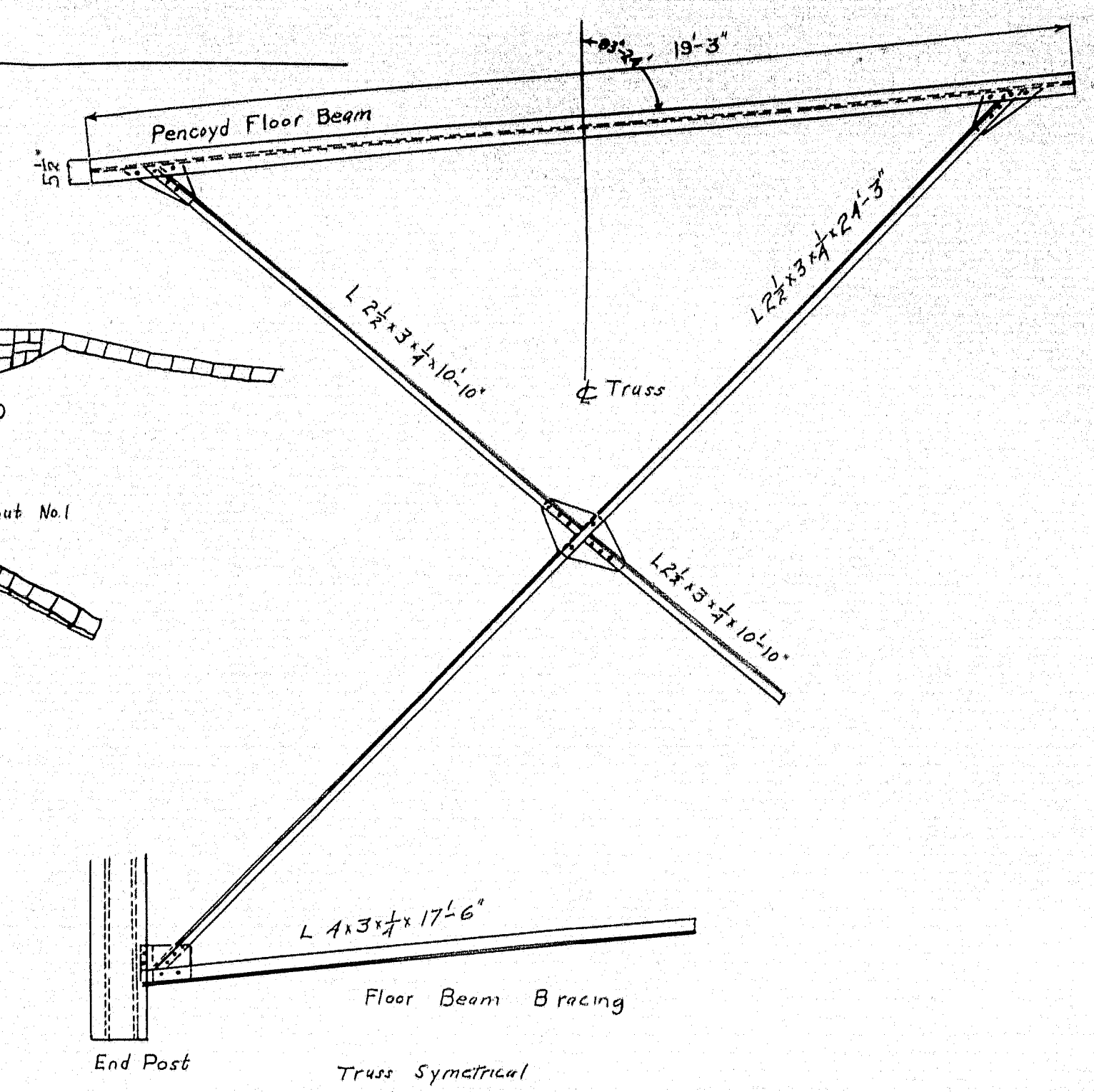


Notes
 No. 1 abut. has timber grillage under it. No. 1 bed plate is .44' lower on D.S. side than U.S. bed plate. Bridge built in 1900 by the Berlin Iron Bridge Co., East Berlin, Conn. Selectmen: E.W. Doble, F.H. Gould, I.E. Sherburn.
 Rollers under bridge are 2' diam. are in bad shape, of no use and badly out of line.
 The top of timber grillage under pier is at elev. 74.0.
 No. 1 abut grillage is undermined 2'-3' on U.S. corner. Small stones are around grillage. Water is 3'-6" deep at U.S. corner and about 6" deep at D.S. corner. Grillage probably large logs slotted parallel to E. road. Three inch planks are on grillage. Plank in center of two trusses at middle of stream is in very poor shape. Several large holes are in top planking. Under planks in two or three places are nearly rotted thru.
 No. 2. abut. timber grillage parallel to E. road, top grillage elev. 73.0. Grillage covered with flagstone on top of which is a row of split stone headers.
 Stream bed: Coarse gravel.



town 11-16
 bridge 3244
 State Highway Commission
 Bridge Division
PLEASANT RIVER BRIDGE
 OVER
PLEASANT RIVER
 in the town of
MILO PISCATAQUIS COUNTY
 Bridge Details
 Sheet of Augusta Sept. 4, 1935

Surveyed by MacDannell
 Plotted and Traced by Lyon

